

# AQUILA CSPM - Azure Integration

This manual explains how to get started monitoring the security posture of your Azure CSP using the Cloud Security Posture Management (CSPM) feature.

## Requirements

- The user who gives the CSPM integration permissions in Azure must be an Azure subscription **admin**.

## Setup

### Service principal with client secret

Before using this method, you must have set up a **Microsoft Entra application** and **service principal that can access resources**. Please go [here](#) before following the steps below.

1. The following information is required.
  1. Directory (**tenant**) **ID** and **Application (client) ID**
    - To get these values:
      - Go to the **Registered apps** section of Microsoft Entra ID.
      - Click on **New Registration**, name your app and click **Register**.
      - Copy your new app's **Directory (tenant) ID** and **Application (client) ID**.
  2. **Client Secret**
    - In Azure portal, select **Certificates & secrets**, then go to the **Client secrets** tab. Click **New client secret**.
    - Copy the new secret "**Value**".
2. Return to Azure. Go to your Azure subscription list and select the subscription or management group you want to monitor with CSPM.
3. Go to **Access control (IAM)** and select **Add Role Assignment**.
4. Select the **Reader** function role, assign access to **User, group, or service principal**, and select your new app.

## How to integrate to AQUILA CSPM Module

### Pre-requisites

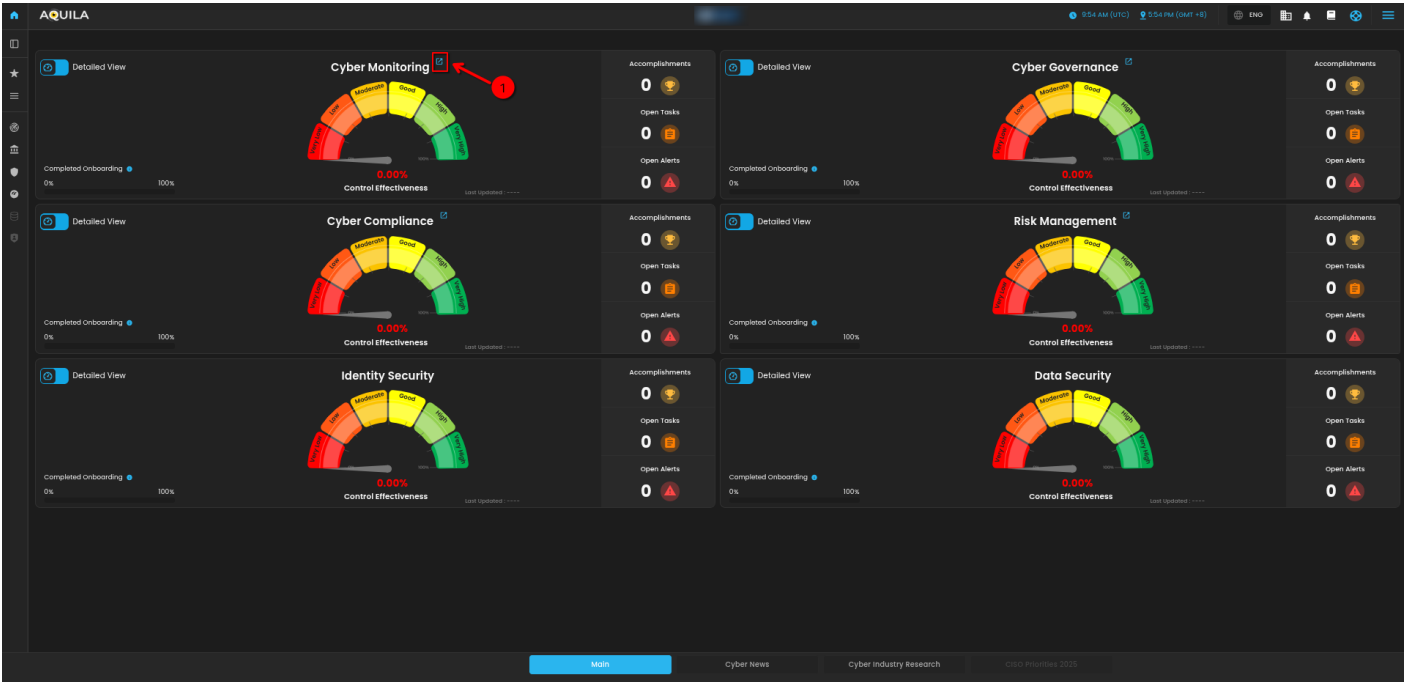
# 1. Access to CyTech - AQUILA

- Only users assigned the "Owner" or "Admin" role can access the Log Collector installation resources within the platform.

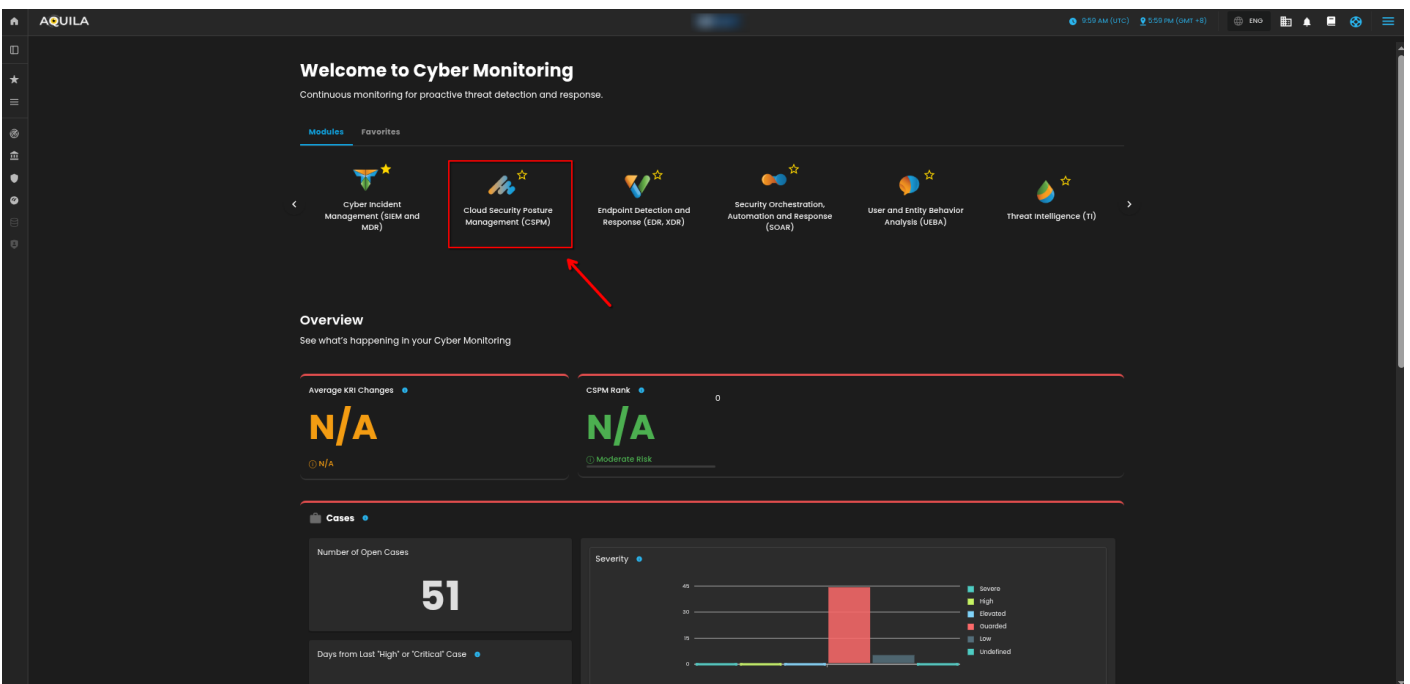
To navigate to CSPM Module please follow the instructions below:

Step 1: Log in to CyTech - AQUILA. Click here --> [AQUILACYBER.ai](https://AQUILACYBER.ai)

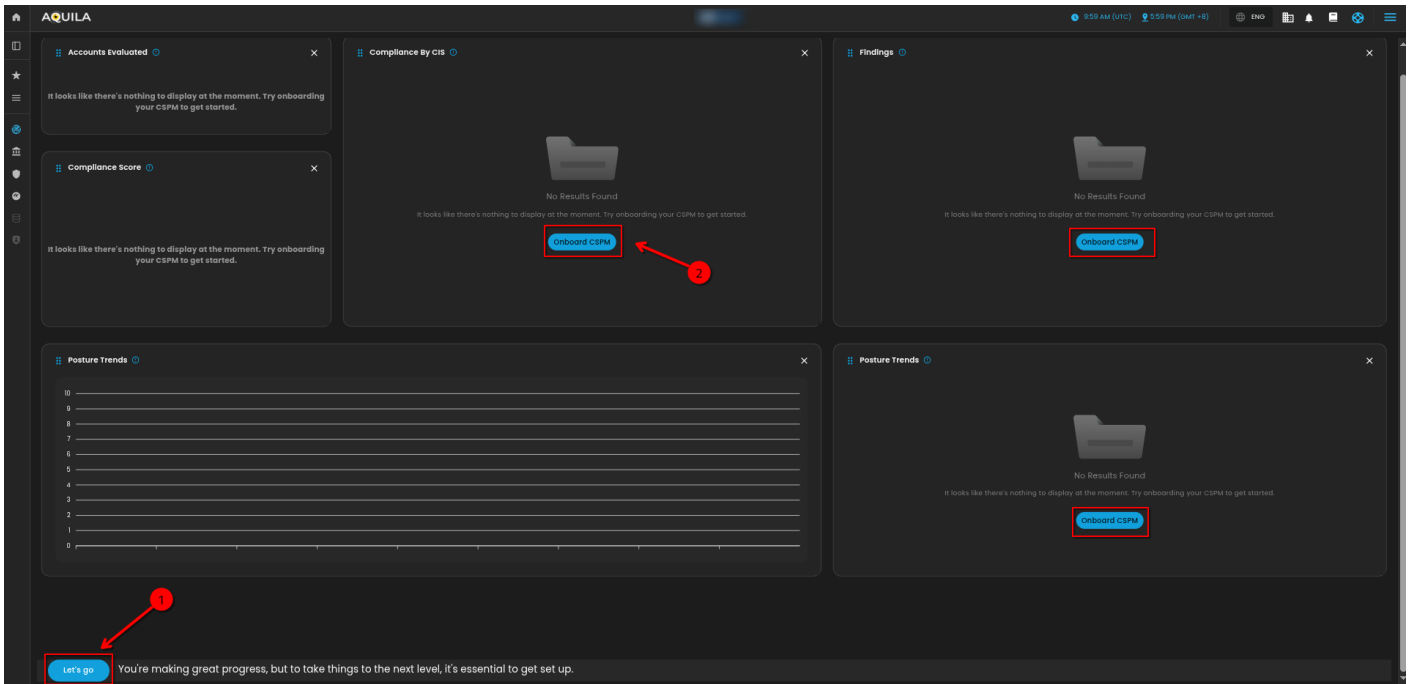
Step 2: Click on Cyber Monitoring.



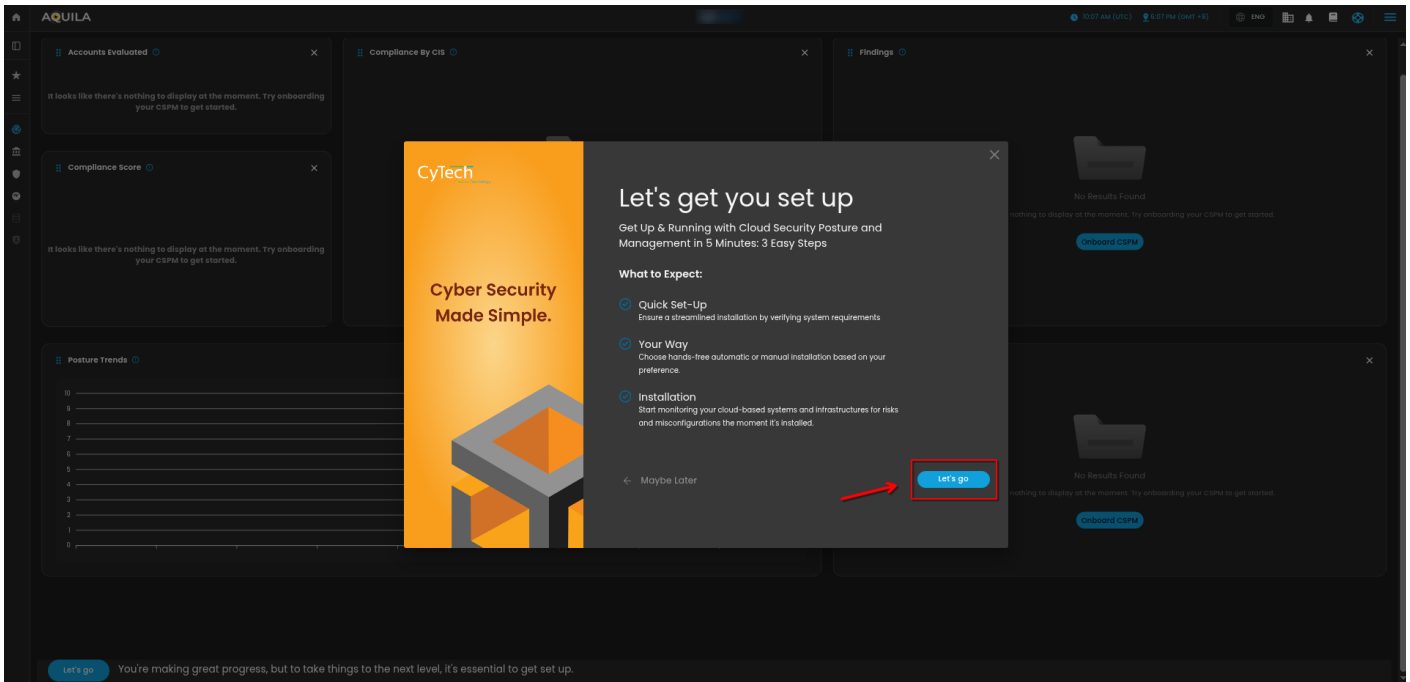
Step 3: Choose Cloud Security Posture Management (CSPM).



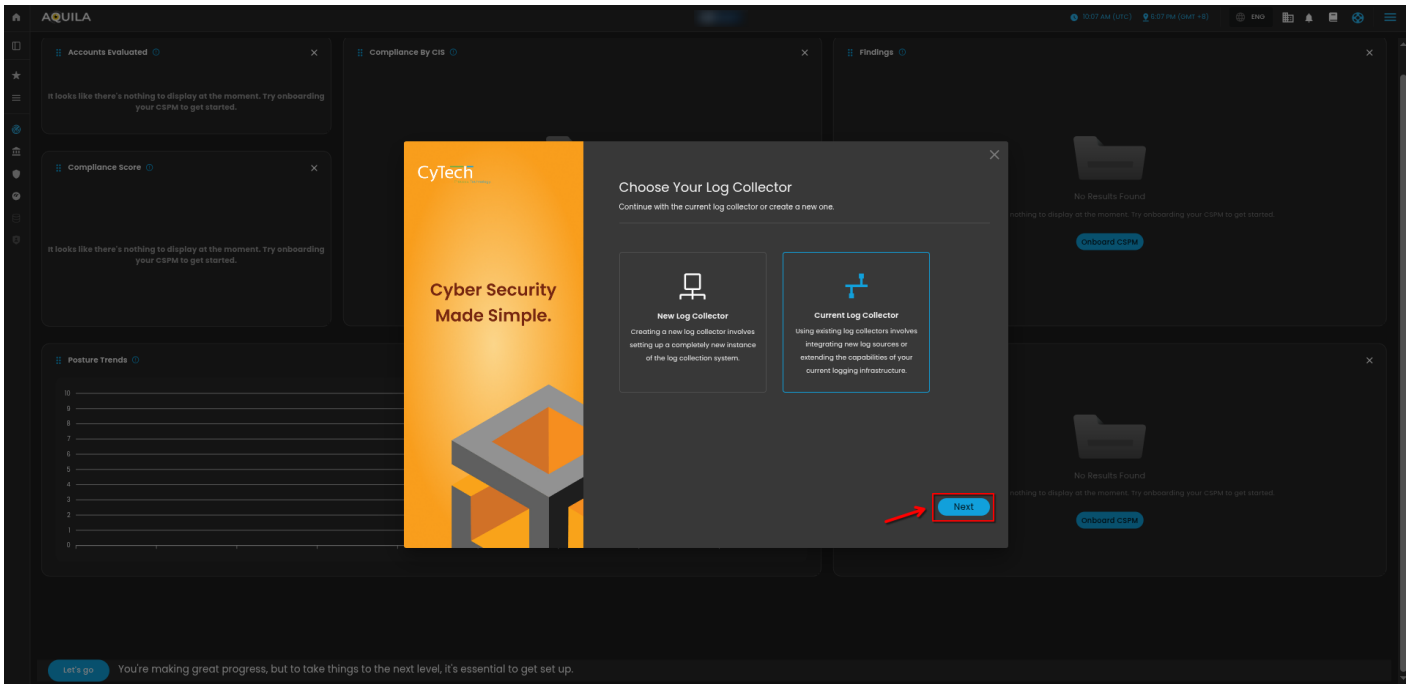
Step 4: Click the "Let's Go" or "Onboard CSPM" icon to launch installation window.



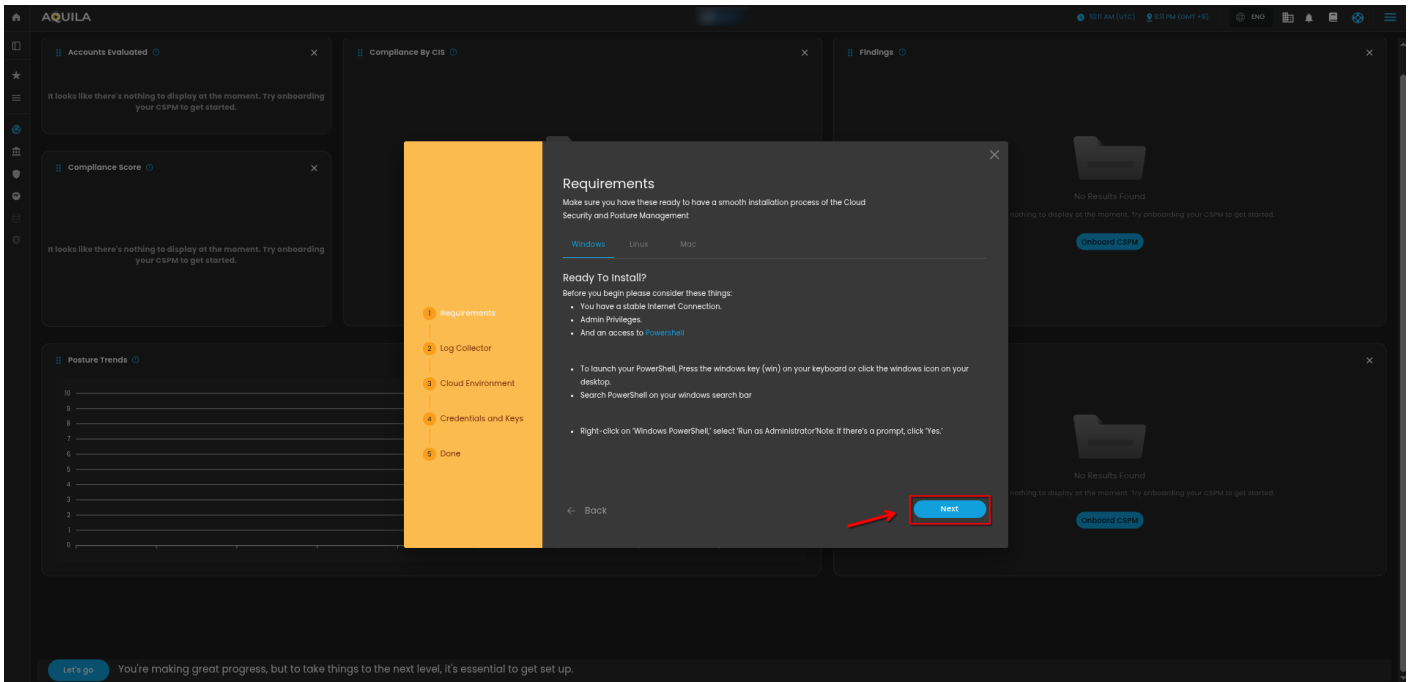
**Step 5: Click "Let's go" to start the integration process.**



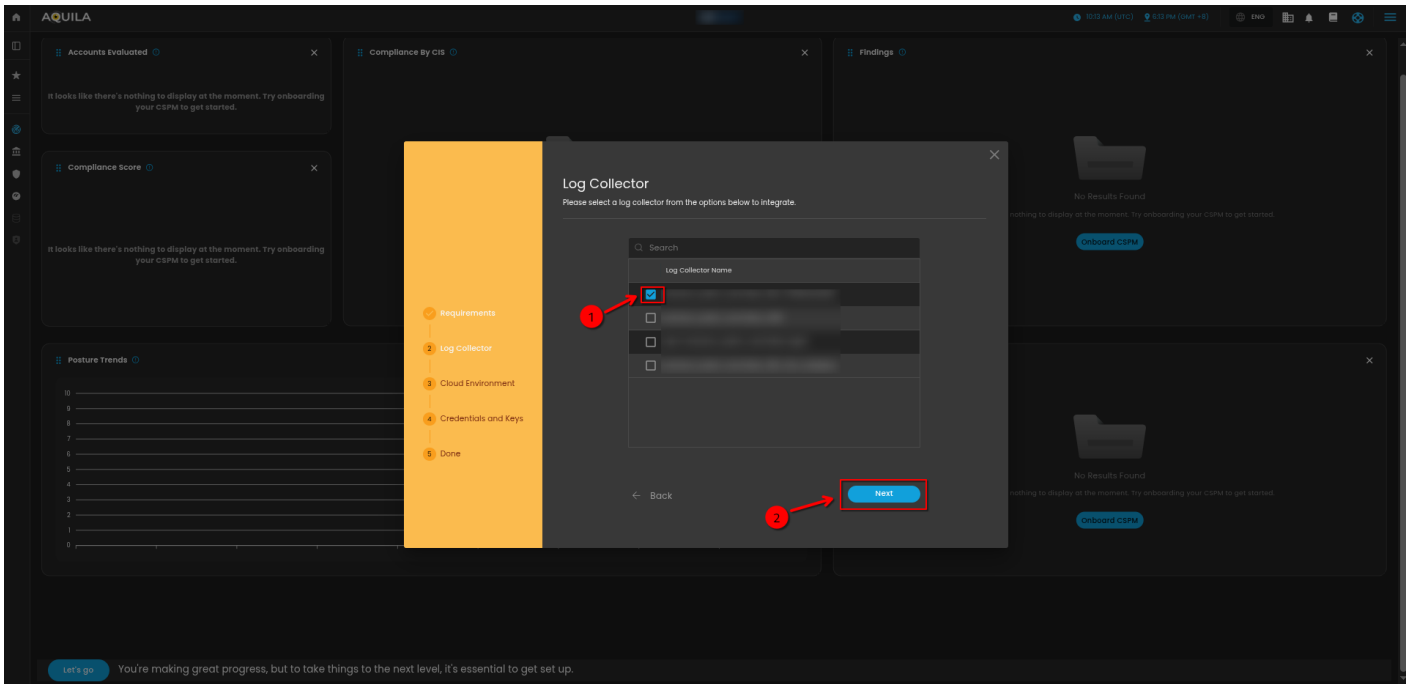
**Step 6: Choose your log collector. If you haven't installed a log collector yet choose "New Log Collector" click here --> [Log Collector Installation](#). If you have already have an existing log collector choose "Current Log Collector" and click "Next".**



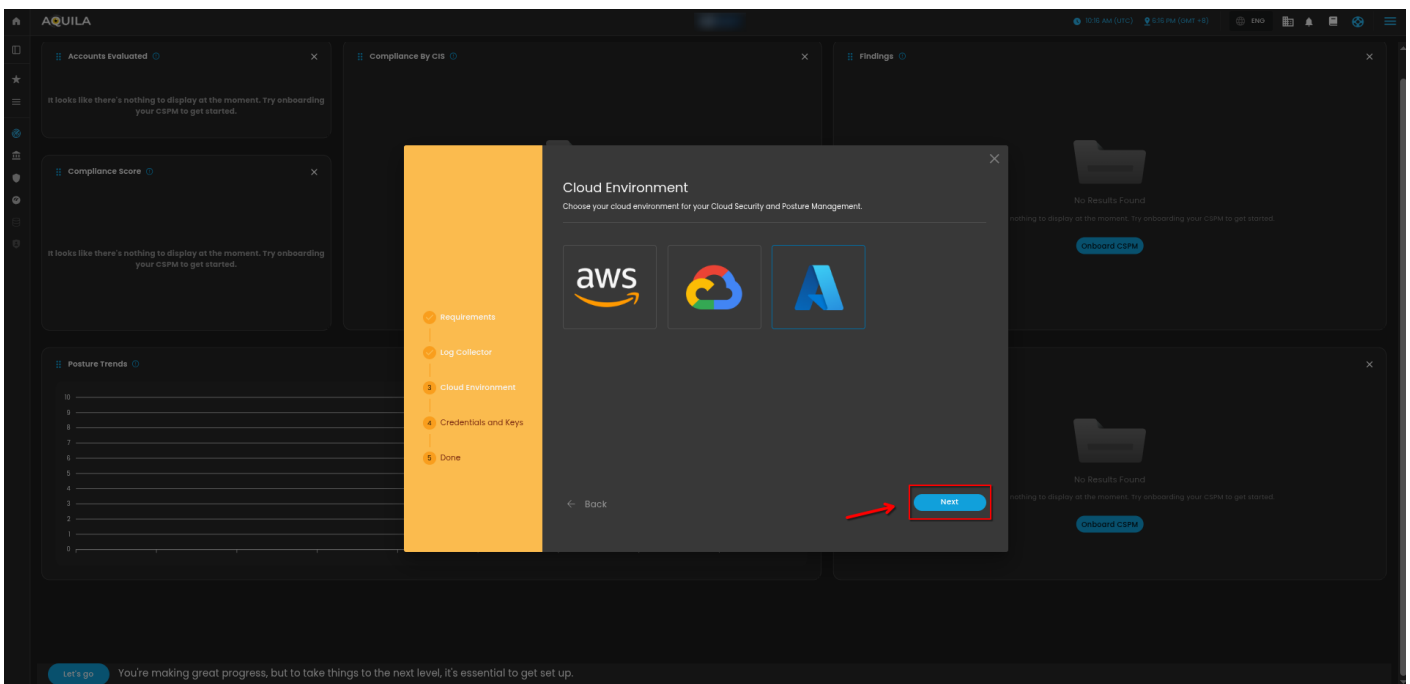
**Step 7: Click "Next" if the requirements are met.**



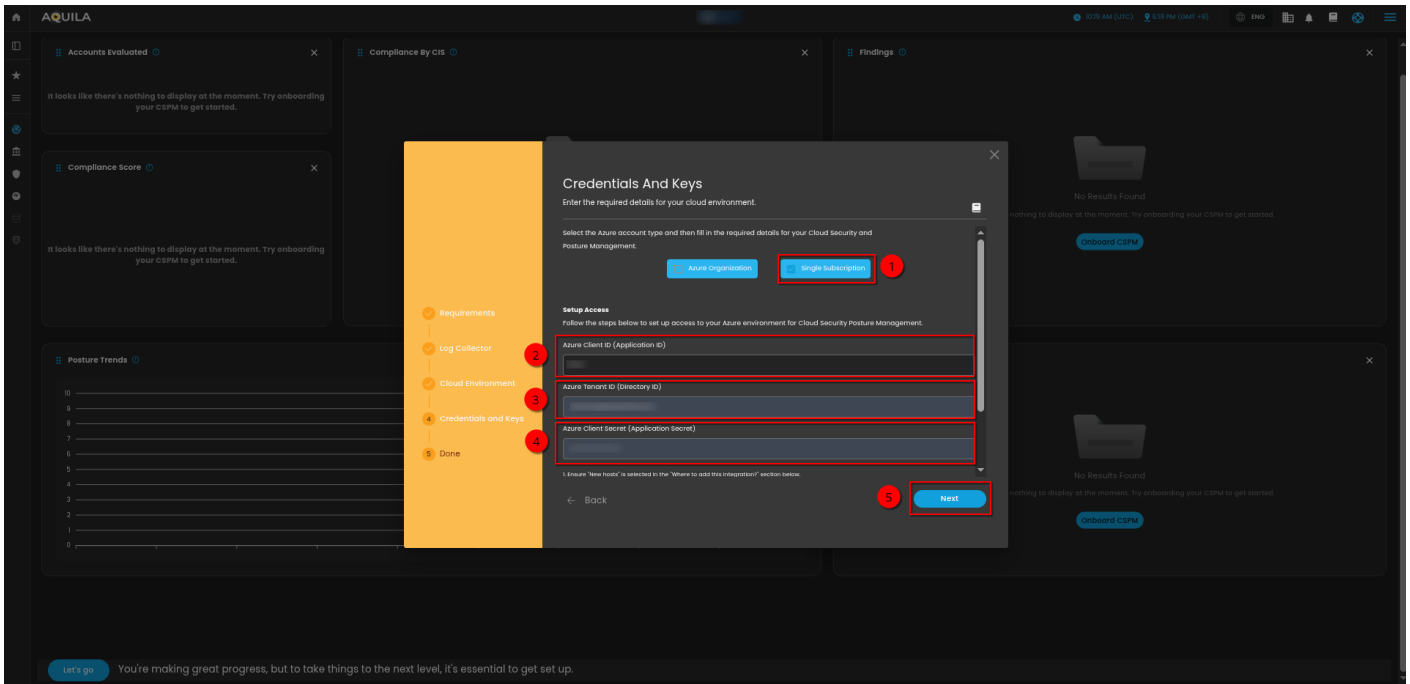
**Step 8: Choose your current log collector. This will collect the logs coming from your log sources.**



**Step 9: Choose Azure and click "Next" to proceed.**



**Step 10: Input all the required credentials from the previous Azure configurations and click "Next" to initiate the integration process. Wait for couple of minutes until a success window shows up.**



Please refer to this manual for the full guidelines of our CPM Module. [click here--> CyTech - AQUILA CPM Manual](#)

If you need further assistance, kindly contact our support at [support@cytechint.com](mailto:support@cytechint.com) for prompt assistance and guidance.

Revision #7

Created 29 November 2024 07:13:53

Updated 16 October 2025 03:47:32 by Richmond Abella