

AQUILA Agent Mass Deployment Manual (MSI Package)

Overview

This document provides a step-by-step guide for deploying the **AQUILA Agent** across Windows endpoints using **Microsoft Intune** with an **MSI installer**. The goal of this deployment is to ensure consistent, secure, and scalable installation of the AQUILA Agent to support SOC monitoring, endpoint visibility, and response capabilities.

This guide is intended for:

- SOC Engineers
 - IT Administrators
 - Endpoint & Security Operations Teams
-

Deployment Objectives

By following this guide, you will:

- Deploy AQUILA Agent at scale using Intune
 - Ensure silent, unattended installation
 - Reduce manual endpoint interaction
 - Maintain consistent agent configuration across environments
 - Improve SOC visibility and endpoint telemetry
-

Prerequisites

Before proceeding, ensure the following requirements are met:

Microsoft Intune

- Microsoft Intune is configured and accessible
- Administrator permissions to create and assign apps

Endpoint Requirements

- Supported Windows OS (Windows 10 / Windows 11 / Windows Server – if applicable)
- Devices enrolled in Microsoft Intune
- Stable internet connectivity

Installer Requirements

- AQUILA Agent **MSI installer** (latest approved build)
- MSI file accessible from your local machine

Deployment Method Summary

Item	Value
Deployment Tool	Microsoft Intune
Installer Type	MSI
Installation Mode	Silent / Unattended
User Interaction	None
Deployment Scope	Device-based (recommended)

Step-by-Step Deployment Instructions

Step 1: Log in to Microsoft Intune Admin Center

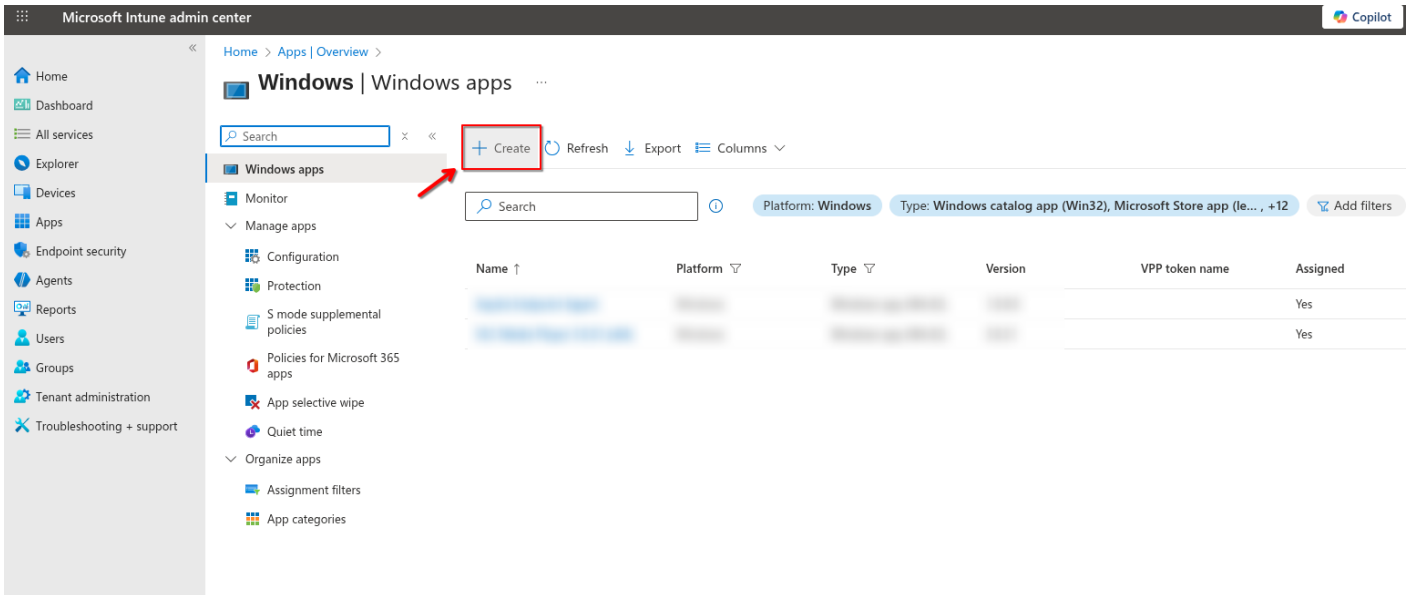
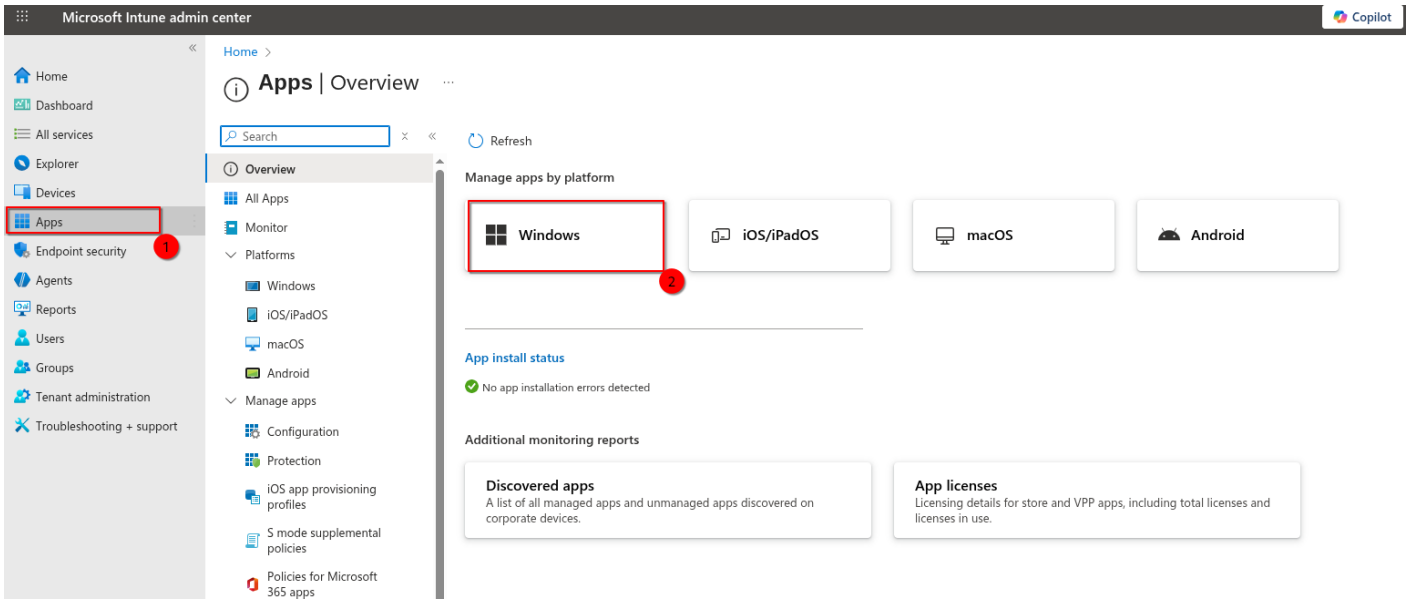
1. Navigate to <https://intune.microsoft.com>
2. Sign in using an account with Intune administrative privileges

Step 2: Create a New Application

1. Go to **Apps** → **Windows**
2. Click **Create**

3. Under *App type*, select **Line-of-business app**

4. Click **Select**



Select app type

Create app



App type

Select app type

Store app

Microsoft Store app (new)

Microsoft Store app (legacy)

Microsoft 365 Apps

Windows 10 and later

Microsoft Edge, version 77 and later

Windows 10 and later

Web Application

Windows web link

Other

Web link

Line-of-business app

Windows app (Win32)

Step 3: Upload AQUILA Agent MSI

1. Click **Select app package file**
2. Upload the **AQUILA Agent MSI installer**
3. Click **OK**

Intune will automatically extract MSI metadata (Product Code, Version, Publisher).

App package file



App package file * ⓘ

Select a file



Name:

Platform:

Size:

MAM Enabled:

OK

App package file



App package file * ⓘ

"Aquila Agent - [redacted].msi"



Name: Aquila Agent

Platform: Windows

Size: 210.02 MiB

MAM Enabled: No

Execution Context: Per-Machine

OK



Step 4: Configure App Information

1. **Name:** AQUILA Agent
2. **Description:** Endpoint Security Agent for SOC Monitoring (EDR, VDR, DLP)
3. **Publisher:** AQUILA Security
4. **Category:** Security
5. (Optional) Upload a logo
6. Click **Next**

Add App

Windows MSI line-of-business app

- 1 App information
- 2 Assignments
- 3 Review + create

Select file * ⓘ

Aquila Agent - [redacted].msi

Name * ⓘ

Aquila Agent

Description *

Get help with markdown supported for descriptions.

Aquila Agent

Preview

Aquila Agent

Publisher * ⓘ

Enter a publisher name

- ✗ The value must not be empty.
- ✗ The length of the publisher name should be between 2 and 1024 characters (inclusive)

App install context ⓘ

User Device

Ignore app version ⓘ

Yes No

Command-line arguments

Category ⓘ

0 selected

Show this as a featured app ⓘ

Yes No

Information URL ⓘ

Enter a valid url

Privacy URI ⓘ

Enter a valid url

Previous Next

Step 5: Assign the Application

- Under **Assignments**:
 - Add **Required** assignment to device or user groups
 - Recommended: **Device groups**
- Select the target group(s)

Click **Next**

Best Practices

- Deploy to a **pilot group** before full rollout
- Use **Supersedence** to upgrade older versions
- Monitor installation status regularly
- Coordinate deployment windows with SOC teams

Microsoft Intune admin center

Home > Apps | Overview > Windows | Windows apps >

Add App

Windows MSI line-of-business app

App information 2 Assignments 3 Review + create

Required

Group mode	Group	Status
No assignments		
+ Add group + Add all users + Add all devices		

Available for enrolled devices

Group mode	Group	Status
No assignments		
+ Add group + Add all users		

Uninstall

Group mode	Group	Status
No assignments		
+ Add group + Add all users + Add all devices		

Previous **Next**

Step 6: Review and Create

1. Review all configuration settings
2. Click **Create**

Deployment will begin automatically based on Intune sync intervals.

Microsoft Intune admin center

Home > Apps | Overview > Windows | Windows apps >

Add App

Windows MSI line-of-business app

App information Assignments **3 Review + create**


Summary

App information

App package file	Aquila Agent - [redacted].msi
Name	Aquila Agent
Description	<input type="text" value="Aquila Agent"/>
Publisher	CyTech
App install context	Device
Ignore app version	No
Command-line arguments	No Command-line arguments
Category	No Category
Show this as a featured app	No
Information URL	No Information URL
Privacy URL	No Privacy URL
Developer	No Developer
Owner	No Owner
Notes	No Notes
Logo	No logo

Assignments

Group mode	Group	Status	Filter mode	Filter
Required				



Post-Deployment Validation

Intune Validation

- Navigate to **Apps** → **Windows** → **AQUILA Agent**
- Check **Device install status**
- Confirm successful installations

Microsoft Intune admin center

Home > Apps > Windows > Windows apps

Aquila Agent

Client Apps

Search [] Delete

Your app is not ready yet. If app content is uploading, wait for it to finish. If app content is not uploading, try creating the app again.

Essentials

Publisher	: C: [Copy to clipboard]	Created	: 1/13/2026, 9:04:40 PM
Operating system	: Windows	Assigned	: No
Version	: 1.0.0.0	App package file	: Aquila Agent - [] .msi

Device status

No data to display

User status

Uploading Aquila Agent []
Uploading Aquila Agent - [] .msi (210.02 MiB).

✔ **Aquila Agent upload finished** [X]
Upload of Aquila Agent - [] .msi finished.

✔ **Application saved** [X]
Application saved successfully.



Delete

Overview

Manage

Properties

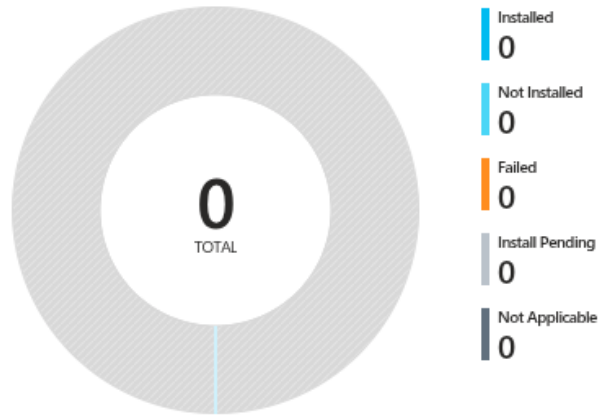
Monitor

Device install status

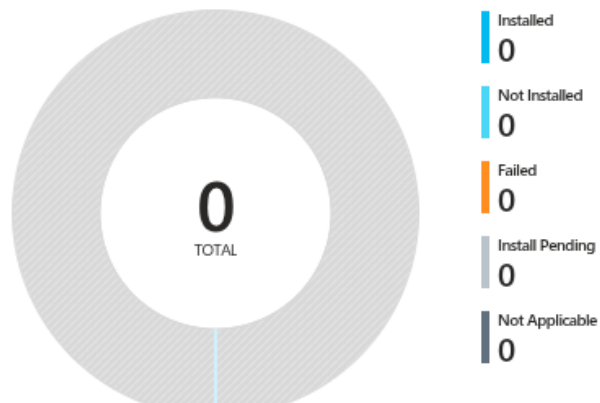
User install status

Assign application to at least one group. Click 'Properties' then edit 'Assignments'.

Device status



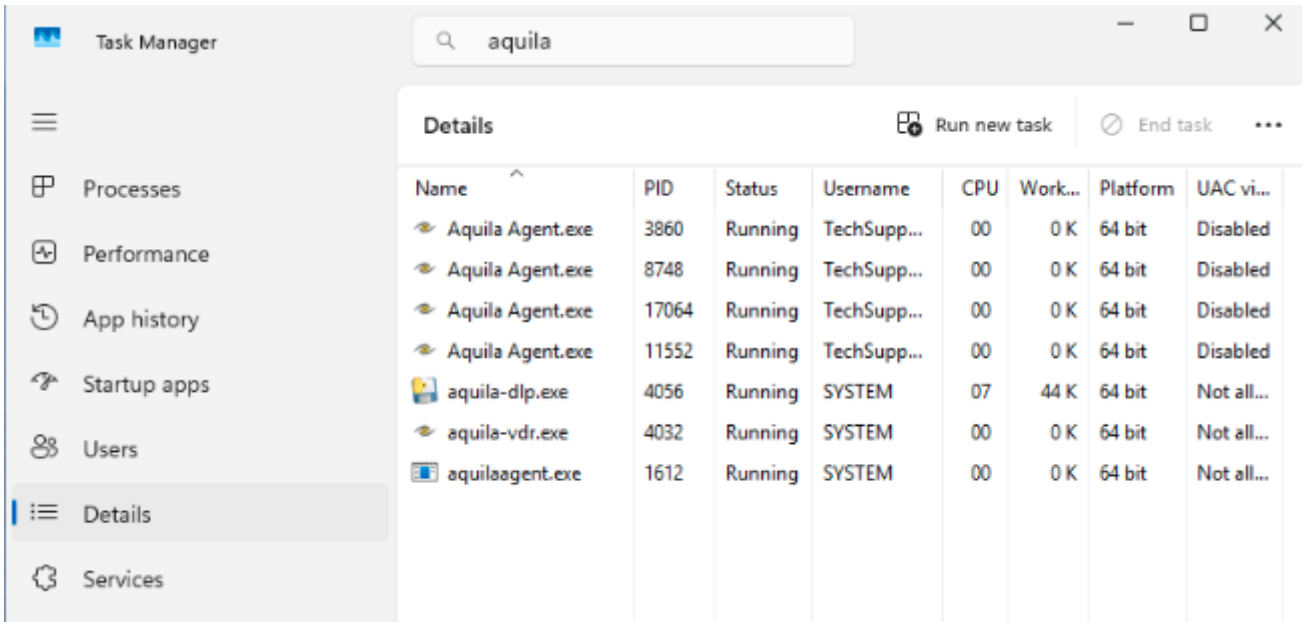
User status



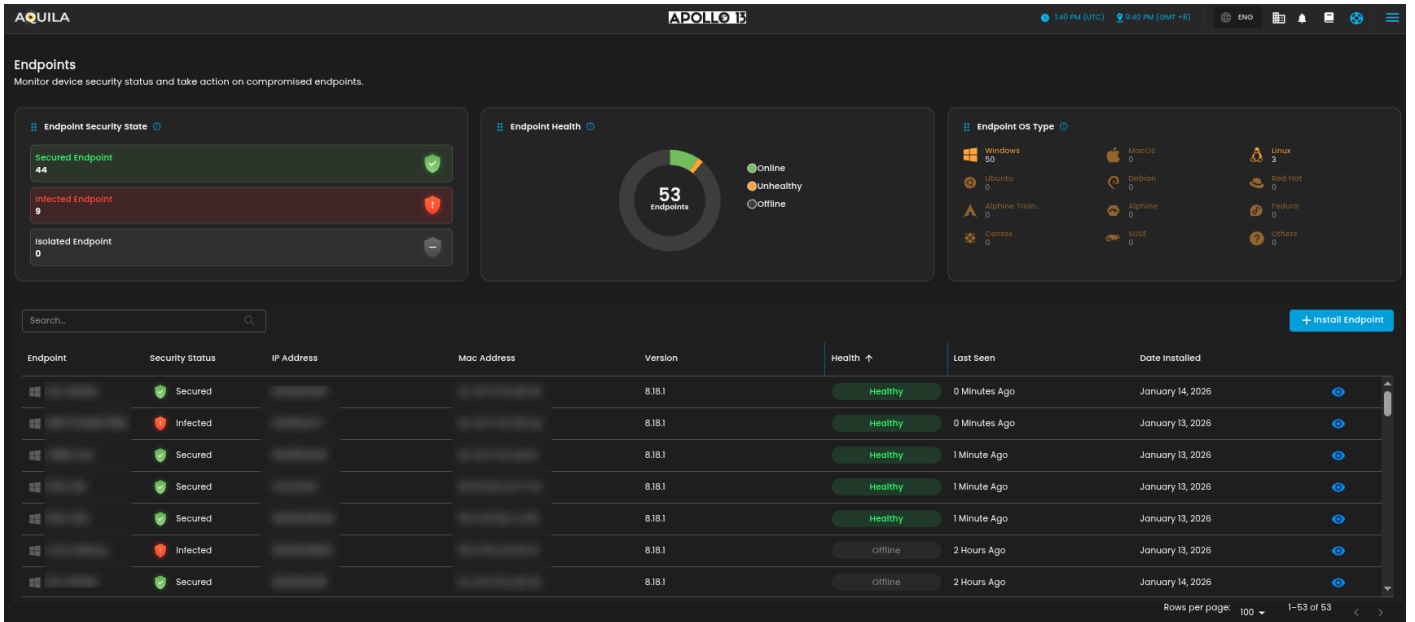
Add or remove favorites by pressing Ctrl+Shift+F

Endpoint Validation

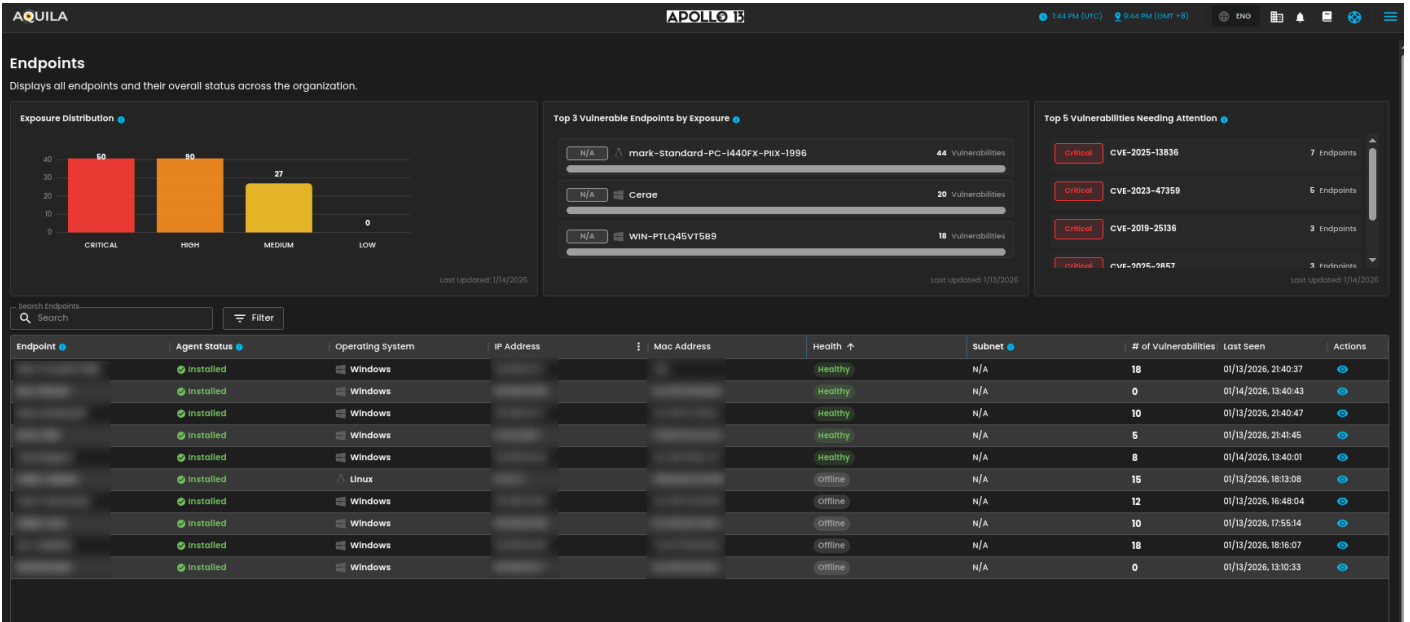
- Verify AQUILA Agent service is running
- Confirm endpoint appears in AQUILA backend / SOC dashboard



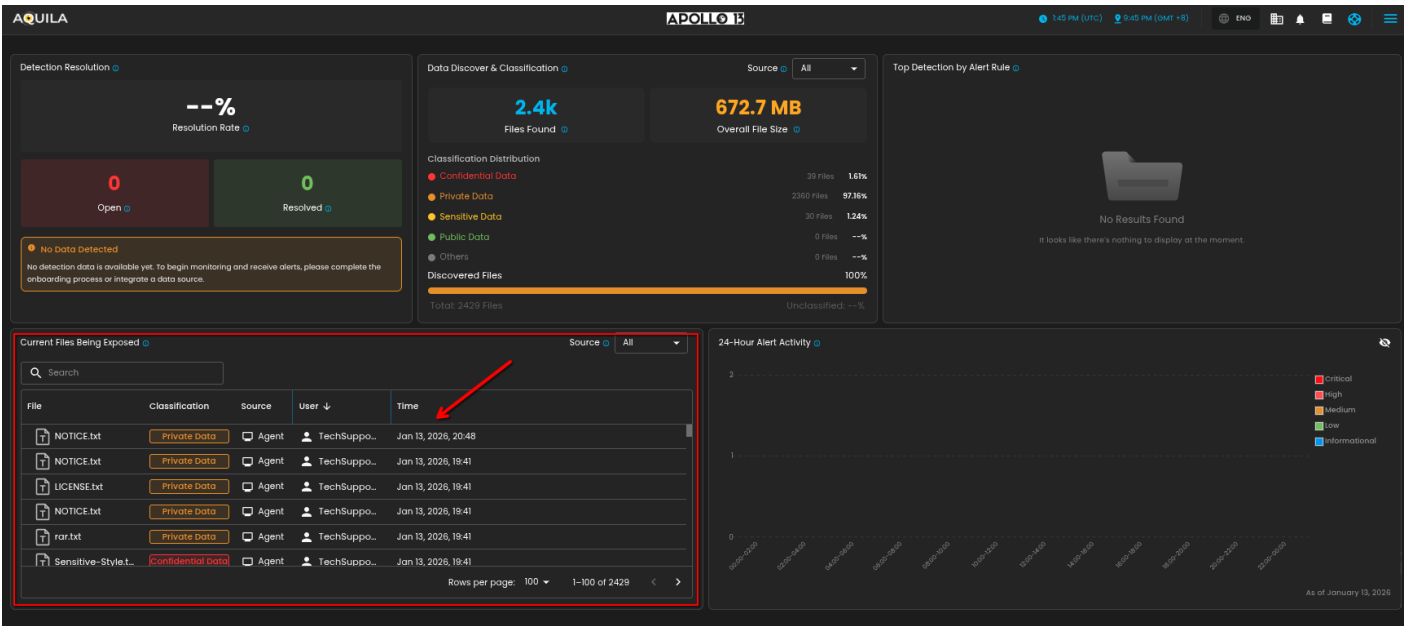
Cyber Monitoring > Endpoint Detection and Response (EDR) > Endpoints



Risk Management > Vulnerability Assessment and Management (VAM) > Endpoint



Data Security > Data Loss Prevention (DLP) > Dashboard



Troubleshooting

Issue	Recommendation
Installation failed	Check Intune error codes and logs
Agent not visible in backend	Verify internet access and enrollment
Multiple versions installed	Ensure old versions are uninstalled or superseded
Defender/UAC prompt	Expected if CA signing is still in progress

Summary

Deploying the AQUILA Agent via Microsoft Intune using an MSI installer provides a reliable, scalable, and secure method for enterprise-wide endpoint onboarding. This approach minimizes manual effort, improves deployment consistency, and ensures endpoints are quickly integrated into SOC monitoring workflows.

For questions, validation support, or deployment assistance, please contact the SOC(csoc@cytechint.com) or AQUILA support team(aquilasupport@cytechint.com.sg).

Revision #1

Created 13 January 2026 13:16:43 by Richmond Abella

Updated 13 January 2026 14:07:05 by Richmond Abella